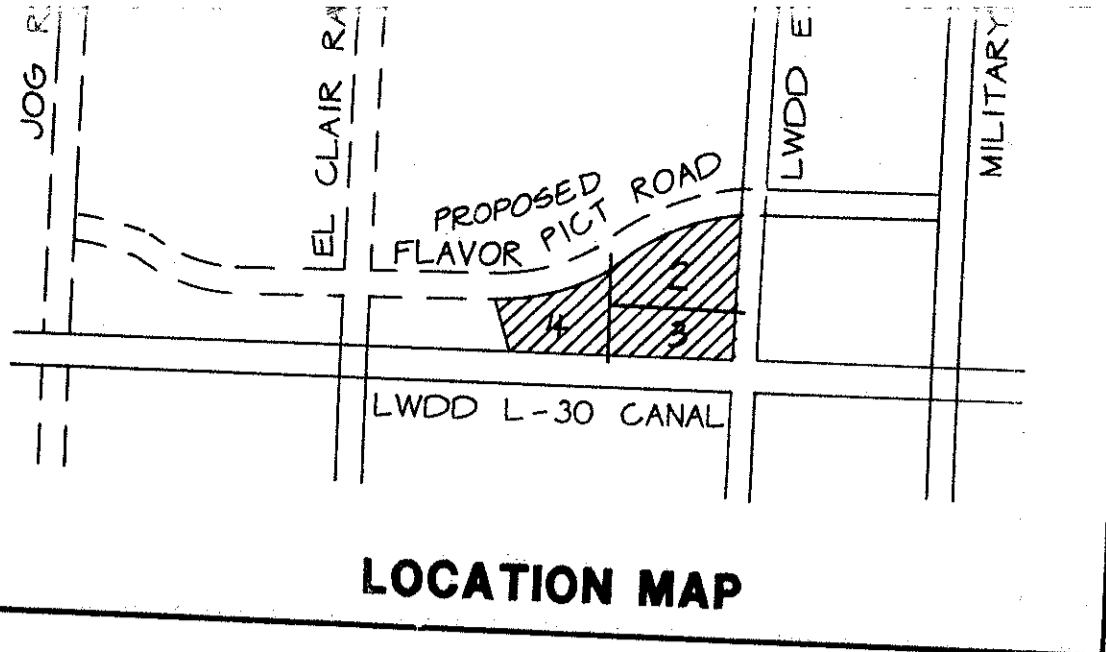


CORAL LAKES V, A P.U.D.

0614-007

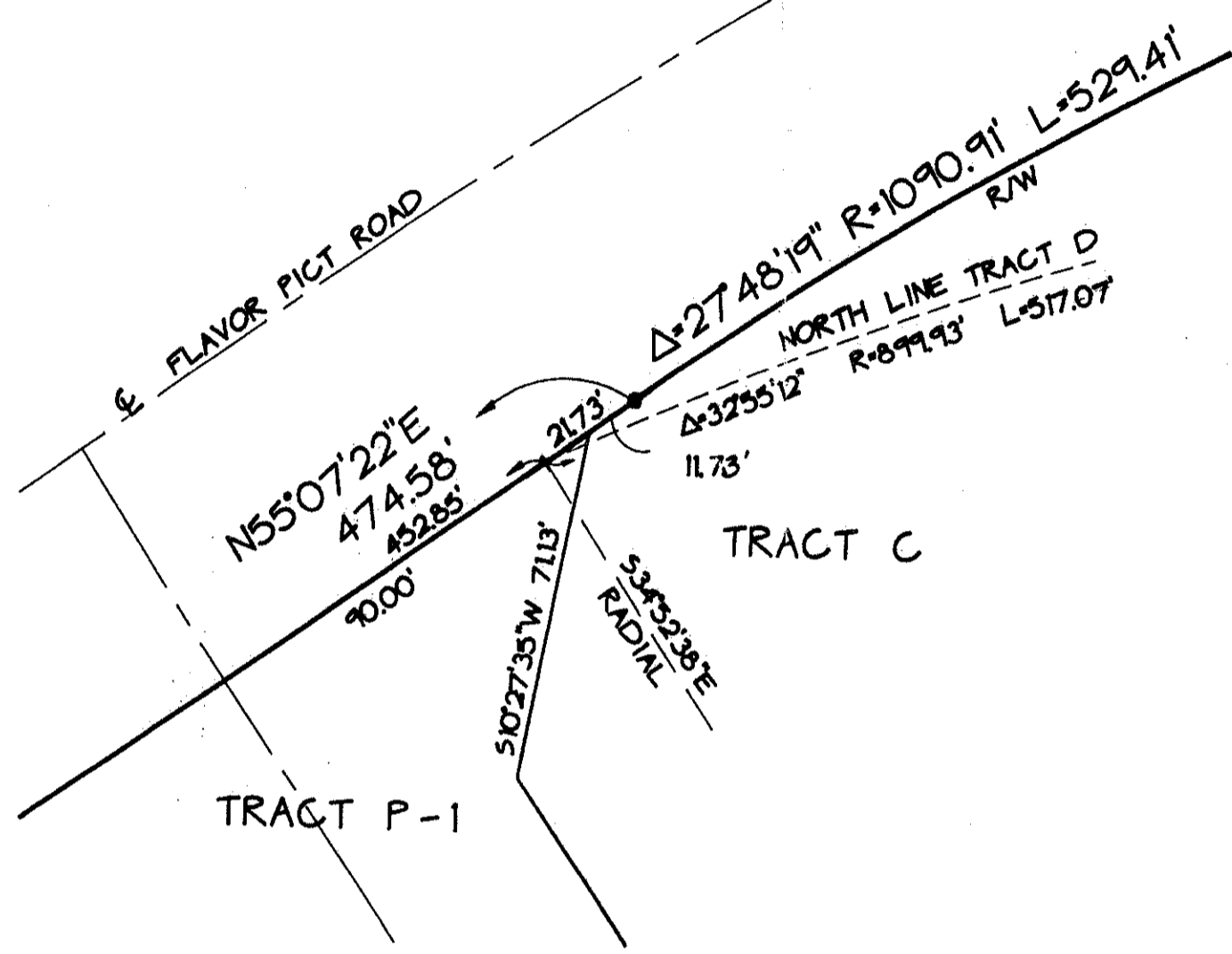
130

A REPLAT OF A PORTION OF TRACT D OF THE PLAT OF CORAL LAKES, AS RECORDED IN PLAT BOOK 67, PAGES 197 THROUGH 198 INCLUSIVE, AND A PORTION OF FLAVOR PICT ROAD RIGHT-OF-WAY AS RECORDED IN OFFICIAL RECORD BOOK 6872, PAGES 1000 THROUGH 1001 INCLUSIVE ALL IN THE PUBLIC RECORDS OF PALM BEACH COUNTY, FLORIDA, ALL IN SECTION 2, TOWNSHIP 46 SOUTH, RANGE 42 EAST, PALM BEACH COUNTY, FLORIDA
 THIS INSTRUMENT PREPARED BY JAMES E. PARK, P.L.S.
 WILLIAMS, HATFIELD & STONER, INC. - ENGINEERS PLANNERS SURVEYORS
 1325 SOUTH CONGRESS AVENUE, SUITE 118, BOYNTON BEACH, FLORIDA 33426

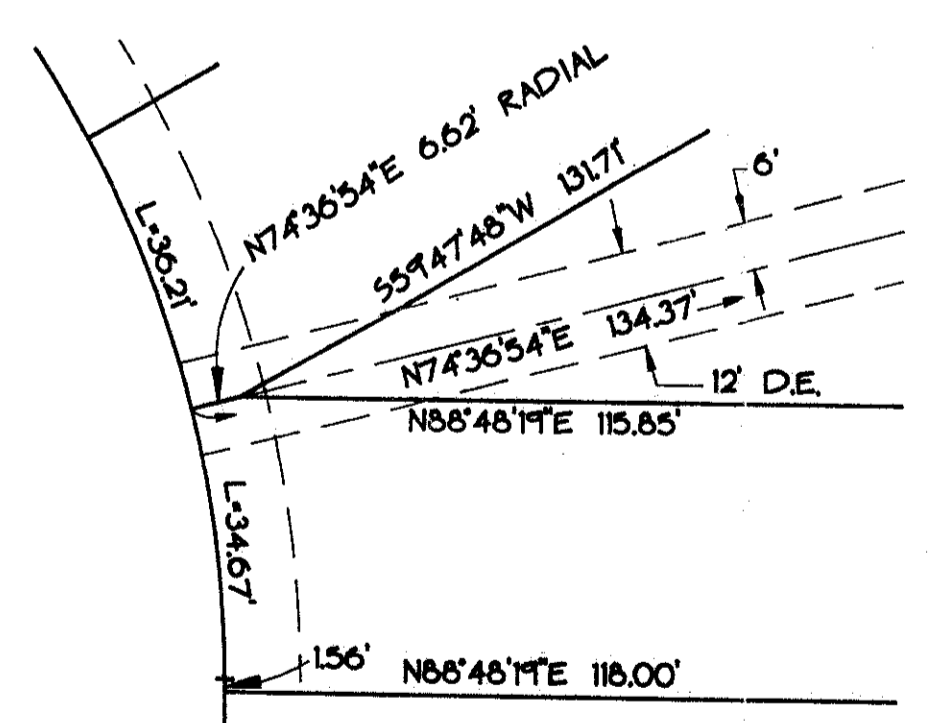


SHEET 2 OF 4

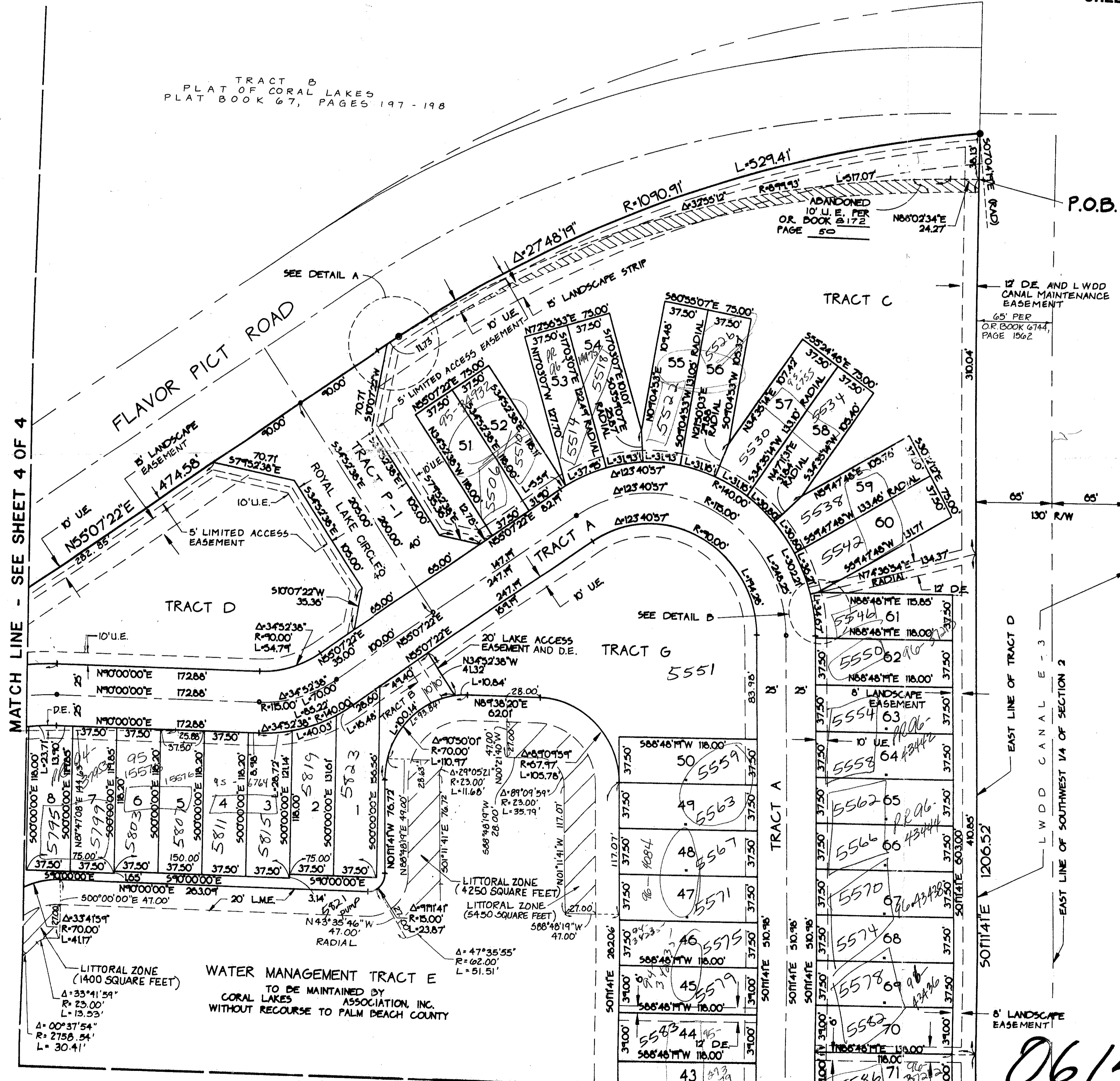
SUBDIVISION - CORAL LAKES
 BOOK 70
 PAGE 170
 FLOOD MAP # 2056
 ZONING AR/SF
 CUD # 36
 PIN # 13
 ZIP CODE 33457
 ENGINEER SC/MC/TJ/JS



DETAIL A



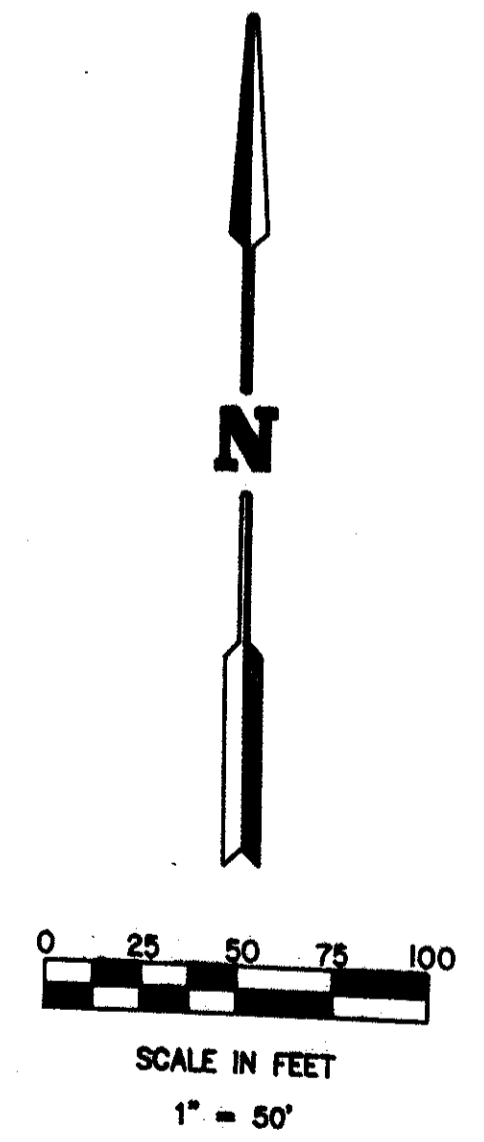
DETAIL B



MATCH LINE - SEE SHEET 4 OF 4

MATCH LINE - SEE SHEET 3 OF 4

PET. 614-013
 ALLOC. #0001



0614-007

CORAL LAKES V 72/130